

Emma Fordyce MacRae is known for her original oil paintings of landscapes, boats, flowers, figures and still lives.

She painted in New England, New York and Europe.

The Cape Ann Landscapes Tour includes paintings of Gloucester, Rockport and the Cape Ann area.

August In New England



Hodgkins Cove



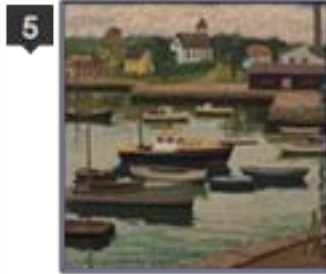
New England Beach



Fishermen at Pigeon Cove



Painting at Pigeon Cove



Rockport Beach



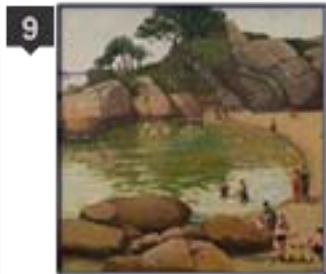
White Boat



Main Street



Half Moon Beach



Where is this scene?



Emma Fordyce MacRae

Cape Ann Landscapes Tour



To locate where Emma placed her easel:

Use with the larger Cape Ann Chamber of Commerce map with the close up of Gloucester to locate the town landscapes

- 1 SatNav : 5 Hodgkins Street, Gloucester, MA
- 2 SatNav : Hodgkins Cove, Gloucester, MA
- 3 SatNav : Lanes Cove Road, Gloucester, MA
- 4 SatNav : Breakwater Avenue, Gloucester, MA
- 5 SatNav : Breakwater Avenue, Gloucester, MA
- 6 SatNav : 1 King Street, Rockport, MA
- 7 SatNav : 72 Commercial Street, Gloucester, MA
- 8 SatNav : 2 Main Street, Gloucester, MA
- 9 SatNav : Stage Fort Park, Gloucester, MA
- 10 Where is this scene?
If you can locate it please let us know.

More info on the landscapes at
www.emmafordycemacrae.com

Where to Stay :

Julietta House, 84 Prospect Street, Gloucester, MA.
www.juliettahouse.com

Where to View :

Telephone Crane Collection on 978 290 9921 for directions and appointment.
www.cranecollection.com

Emma Fordyce MacRae

Cape Ann Landscapes Tour

