

EMMA FORDYCE MACRAE  
1887-1974



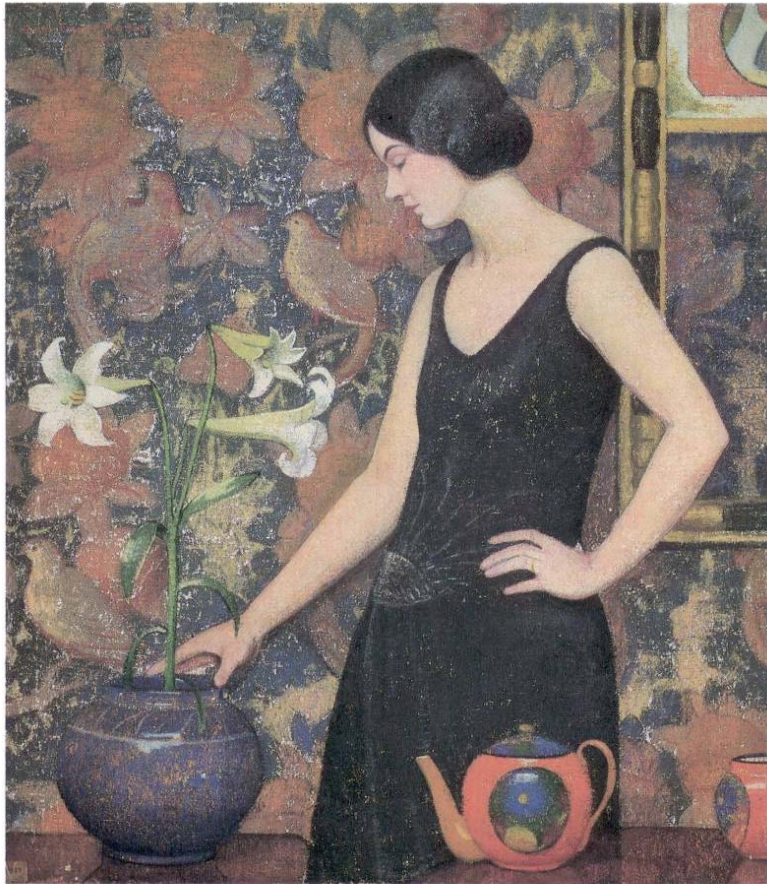
November 19–December 17, 1983

RICHARD YORK GALLERY

21 East 65th Street  
New York, New York 10021  
212-772-9155



15. *Foxgloves*, oil on canvas, 36 x 30 inches



4. *Naida with Lilies*, oil on canvas, 36 x 32 inches

Cover: 9. *St. Mark's Square*, Oil on artist's board, 14 x 17 inches

---

## CATALOGUE

1. *Cosmos Decoration*  
Oil on canvas, 32¼ x 36 inches  
Signed (at upper left): Emma Fordyce MacRae;  
also titled (on a label affixed to the stretcher):  
Cosmos Decoration  
Exhibited: Architectural League, Metropolitan  
Museum, New York, 1921; Grace Horne Gallery,  
Boston, 1923; National Association of Women  
Painters and Sculptors, New York, 1924; Grand  
Central Art Galleries, Inc., New York, 1930;  
The Currier Gallery of Art, Manchester, New  
Hampshire, 1935, *One man show*
  2. *June Flowers*  
Oil on canvas, 30 x 25 inches  
Signed (at upper right): Emma Fordyce MacRae;  
also titled (on a label affixed to the reverse):  
June Flowers  
Exhibited: Philadelphia Art Club, Pennsylvania,  
n.d.; Architectural League, Metropolitan  
Museum, New York, 1921; Dudensing Galleries,  
New York, 1925, no. 12; Washington Society of  
Painters, 1924; Syracuse Museum, New York,  
1924; Philadelphia Museum, Pennsylvania, 1925;  
Ainslie Galleries, New York, *One man show*, no.  
9, n.d.
  3. *Iris Decoration*  
Oil on canvas, 30' x 34 inches  
Signed (at lower left): Emma Fordyce MacRae;  
also titled (on a label affixed to the stretcher):  
Iris Decoration  
Exhibited: Grace Horne Gallery, Boston, 1923;  
Grand Central Art Galleries, Inc., New York,  
1936, *One man show*, no. 20; Pennsylvania Acad-  
emy of Fine Arts, Philadelphia, 1937, *132nd*  
*Annual Exhibition*
  4. *Naida with Lilies*  
Oil on canvas, 36 x 32 inches  
Signed & dated (at upper left): Emma Fordyce  
MacRae/1927; also titled (on a label affixed to  
the stretcher): Naida with Lilies  
Exhibited: National Academy of Design, New  
York, 1927, *102nd Annual Exhibition*, no. 27;  
Roerich Museum, New York, 1927, no. 25;  
National Association of Women Painters and  
Sculptors, New York, 1930-1931, *39th Annual*  
*Exhibition*, no. 112; Roerich Museum, New York,  
1930, *One man show*, no. 25
  5. *The Dancer*  
Oil on canvas, 45 x 40 inches  
Signed & dated (at upper left): Emma Fordyce  
MacRae/1928; also titled (on a label affixed to  
the stretcher): The Dancer  
Exhibited: National Academy of Design, New  
York, 1928, *103rd Annual Exhibition*, no. 57, titled  
"The Dreamer"; Grand Central Art Galleries,  
Inc., New York, 1928; National Association of  
Women Painters and Sculptors, New York, 1931,  
*40th Annual Exhibition*, no. 124; Roerich Museum,  
New York, 1930, *One man show*, no. 17; Doll &  
Richards, Boston, 1935, *One man show*, no. 13;  
The Currier Gallery of Art, Manchester, New  
Hampshire, 1935, *One man show*
  6. *The White Girl*  
Oil on canvas, 40 x 32 inches  
Signed & dated (at upper left): Emma Fordyce  
MacRae/1928; also titled (on a label affixed to  
the stretcher): The White Girl  
Exhibited: National Academy of Design, New  
York, 1927, *Winter Exhibition*, no. 52; Rotary  
Club, Albany, New York, Washington, D.C.,  
Palm Beach, Florida, and Chicago, Illinois, 1927;  
O'Brien Gallery, Cleveland, 1927; North Shore  
Arts Association, Gloucester, Massachusetts,  
1928; The American Women's Association,  
American Women's Club, New York, 1929;  
Grand Central Art Galleries, Inc., New York,  
1929; Montclair Art Museum, New Jersey, n.d.;  
Parrish Art Museum, Southampton, New York,  
n.d.; National Association of Women Painters  
and Sculptors, 1930, *38th Annual Exhibition*,  
no. 159  
Awarded Grand Central Prize, 1929
  7. *St. Mark's Square*  
Oil on artist's board, 14 x 17 inches  
A sketch of two women is on the reverse.
  8. *St. Mark's Square*  
Oil on artist's board, 16 x 19¾ inches  
Titled (on a label affixed to the reverse): St  
Mark's/Square
  9. *St. Mark's Square*  
Oil on artist's board, 14 x 17 inches  
Titled (on a label affixed to the reverse):  
St. Mark's Square
  10. *Santa Maria della Salute, Morning*  
Oil on artist's board, 17 x 14 inches  
Titled (on a label affixed to the reverse):  
St. Maria della Salute/Morning  
Exhibited: Roerich Museum, New York, 1930,  
*One man show*, no. 55
  11. *Santa Maria della Salute, Before Sunset*  
Oil on board, 19¾ x 24 inches  
Exhibited: Roerich Museum, New York, 1930,  
*One man show*, no. 54
  12. *Through the Arches*  
Oil on artist's board, 16¾ x 13¾ inches  
Titled (on a label affixed to the reverse):  
Through the Arches
-

13. *The White Horse*  
Oil on canvas, 36 x 31¼ inches  
Signed (at upper right): Emma Fordyce MacRae  
Painted in 1930  
Exhibited: Corcoran Museum, Washington, D.C., 1930; Pennsylvania Academy of Fine Arts, Philadelphia, 1931; Boston Arts Club, 1933; Doll & Richards, Boston, 1935, *One man show*, no. 9, illus. on the cover
14. *The Chinese Vase*  
Oil on canvas, 36 x 32 inches  
Signed (at lower left): Emma Fordyce MacRae  
Painted in 1932  
Exhibited: Brooklyn Museum, New York, 1934; The Currier Gallery of Art, Manchester, New Hampshire, 1935, *One man show*; North Shore Arts Association, Gloucester, Massachusetts, 1935; Doll & Richards, Boston, 1935, *One man show*, no. 23; Grand Central Art Galleries, Inc., New York, 1936, *One man show*, no. 23; Pen and Brush, Inc., New York, 1940
15. *Foxgloves*  
Oil on canvas, 36 x 30 inches  
Signed (at upper left): Emma Fordyce MacRae  
Painted in 1933  
Exhibited: Doll & Richards, Boston, 1935, *One man show*, no. 17; Pen and Brush, Inc., New York, 1943; National Academy of Design, New York, 1945
16. *Fishing Boats*  
Oil on board, 16¾ x 13¾ inches  
Signed (at lower left): Emma Fordyce MacRae;  
also titled (on a label affixed to the reverse):  
*Fishing Boats*  
Painted in the 1930s  
Exhibited: Ainslie Galleries, New York, *One man show*, no. 24, n.d.; Doll & Richards, Boston, 1935, *One man show*, no. 6; Grand Central Art Galleries, Inc., New York, n.d.; The American Women's Association, American Women's Club, New York, n.d.
17. *Apple Blossoms*  
Oil on canvas, 32 x 36 inches  
Signed (at upper left): Emma Fordyce MacRae;  
also titled (on a label affixed to the reverse):  
*Apple Blossoms*  
Exhibited: Ainslie Galleries, New York, *One man show*, no. 1, n.d.; Doll & Richards, Boston, 1935, *One man show*, no. 11
18. *Gray and Green*  
Oil on artist's board, 9 x 12 inches  
Signed (at lower left): Emma Fordyce MacRae;  
also titled (on a label affixed to the reverse):  
*Gray and Green*  
Exhibited: Doll & Richards, Boston, 1935, *One man show*, no. 3; Montclair Art Museum, New Jersey, n.d.
19. *Grey Day Reflections*  
Oil on canvas, 22 x 28 inches  
Signed (at lower right): Emma Fordyce MacRae;  
also titled (on a label affixed to the reverse):  
*Grey Day Reflections*
20. *Iris with Japanese Print*  
Oil on canvas, 30 x 25 inches  
Painted in 1938  
Exhibited: New York Society of Painters, 1938; National Art Club, New York, 1939, *Exhibition of Flower Paintings*, no. 22; The MacDowell Club, New York, *One man show*, 1941; Philadelphia Ten Group, 1941; The American Women's Association, American Women's Club, New York, 1941; Audubon House, New York, 1950
21. *At the Beach*  
Oil on masonite, 25 x 30 inches  
Dated (on the stretcher): July 1941
22. *Half Moon Beach II*  
Oil on canvas board, 22 x 28 inches  
Signed & dated (at lower right): Emma Fordyce MacRae/1942; also titled (on a label affixed to the backing): *Half Moon Beach II*  
Exhibited: North Shore Arts Association, Gloucester, Massachusetts, 1944; Woodmere Art Gallery, Philadelphia, Pennsylvania, 1945; Allied Artists of America, Southampton Guild, New York, n.d.; Pen and Brush, Inc., New York, 1946; Thieme Gallery, Rockport, Massachusetts, 1957  
Received 1st prize at the Pen and Brush 1946 show.
23. *Sailor with Girl*  
Oil on masonite, 8 x 10 inches  
Painted in 1943  
An oil sketch of a village is on the reverse.
24. *Rowboats in Central Park*  
Oil on masonite, 8 x 10 inches  
Signed (at lower left): Emma Fordyce MacRae;  
also titled (on a label affixed to the reverse):  
*Rowboats/in/Central/Park*  
Painted in 1944
25. *Lily with Black Vase*  
Oil on masonite, 26 x 17¾ inches  
Signed (at upper left): Emma Fordyce MacRae  
Painted in 1946  
Exhibited: North Shore Arts Association, Gloucester, Massachusetts, 1948; Allied Artists of America, Inc., New York, 1948; Pen and Brush, Inc., New York, 1950; Cosmopolitan Art
-

- Association, New York, 1951; Grand Central Art Galleries, Inc., New York, 1954
26. *Dogwood in Indian Bowl*  
Oil on canvas, 35¼ x 31¼ inches  
Signed & dated (at upper right): Emma Fordyce MacRae/1947; also titled (on a label affixed to the backing): Dogwood in Indian Bowl  
Exhibited: North Shore Arts Association, Gloucester, Massachusetts, 1946; Grand Central Art Galleries, Inc., New York, n.d.; National Association of Women Painters and Sculptors, New York, 1948; Audubon House, New York, 1950
27. *Sunning Seals*  
Oil on artist's board, 8 x 10 inches  
Titled (on a label affixed to the reverse): Sunning Seals  
Painted in 1949
28. *Village in the Swiss Alps*  
Oil on artist's board, 13¼ x 17 inches  
Painted in the 1950's
29. *St. George's, Bermuda*  
Oil on masonite, 22 x 28 inches  
Signed (at at lower right): Emma Fordyce MacRae  
Painted in 1952  
Exhibited: National Academy of Design, New York, 1956; Knickerbocker Club, New York, 1967
30. *Pot Plant in Clay Vase, Gloxinia*  
Oil on masonite, 19⅞ x 15⅞ inches  
Signed & dated (at lower left): Emma Fordyce MacRae/1954; also titled (on a label affixed to the reverse): Pot Plant in Clay Vase

## BIOGRAPHY

Studied in New York at the Art Students League under Robert Reid, F. Luis Mora, E.F. Blumenschein and at the New York School of Art under Kenneth Hayes Miller.

Memberships were held in New York at the National Association of Women Painters and Sculptors, the American Women's Association, the Allied Artists of America, the MacDowell Club, the Pen and Brush Club, the New York Society of Painters, the Art Alliance of America, and at the National Academy of Design as an associate; also at the Boston Arts Club, the North Shore Arts Association in Gloucester, Massachusetts and the Philadelphia Art Alliance.

Exhibitions were held in New York at the Metropolitan Museum, the Brooklyn Museum, the National Academy of Design, the MacDowell Club, the Corona Mundi International Art Center of Roerich Museum, the Ainslie Galleries, the Dudensing Galleries, the Grand Central Art Galleries, Inc., the Audubon House, the National Art Club, the National Association of Women Painters and Sculptors, the American Women's Association, the National Society of Mural Painters, the Architectural League of New York, the Pen and Brush Club, the New York Society of Painters, the Cosmopolitan Art Association, the Allied Artists of America, and the Knickerbocker Club; in Boston at the Grace Horne Gallery, Doll & Richards, and the Boston Arts Club; in Manchester, New Hampshire at the Currier Gallery of Art; in Gloucester, Massachusetts at the North Shore Arts Association; in Rockport, Massachusetts at the Thieme Gallery; in Cleveland, Ohio at the O'Brien Gallery; in Rhode Island at the Newport Art Association; in Philadelphia at the Pennsylvania Academy of Fine Arts, the Philadelphia Museum, and the Woodmere Art Gallery; in Pittsburgh, Pennsylvania at the Carnegie Art Institute; in Syracuse, New York at the Syracuse Museum; in New Jersey at the Montclair Art Museum; in Southampton, New York at the Parrish Art Museum

One man shows were held in New York at the Corona Mundi International Art Center of Roerich Museum, 1930, the Ainslie Galleries, n.d., the Grand Central Art Galleries, Inc., 1936, the Cosmopolitan Art Association, 1937 and the MacDowell Club, 1941; in Boston at Doll & Richards, 1935, and the Boston Art Club, 1937; and in Manchester, New Hampshire, the Currier Gallery of Art

Awards were received in New York at the Pen and Brush Club, 1946, 1950, 1953; the National Association of Women Artists, 1941, 1945; the Allied Artists of America, 1942; the National Art Club, 1930; the Grand Central Art Galleries, Inc., and the National Academy of Design

Collections: Wesleyan College, Middletown, Connecticut; the Cosmopolitan Club, New York and the National Academy of Design

Recorded: E. Benezit, *Dictionnaire des Peintres, Sculpteurs, Dessinateurs, et Graveurs*, 1976, p. 50; Jim Collins & Glen B. Opitz, eds., *Women Artists in America*, 1980; Mantle Fielding, *Dictionary of American Painters, Sculptors and Engravers*, 1926, p. 225; Daniel Trowbridge Mallet, *Index of Artists*, 1948, p. 268