

Emma Fordyce MacRae is known for her original oil paintings of landscapes, boats, flowers, figures and still lives.

She painted in New England, New York and Europe.

The Cape Ann Landscapes Tour includes paintings of Gloucester, Rockport and the Cape Ann area.

### August In New England



### Hodgkins Cove



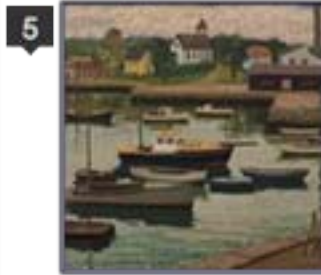
### New England Beach



### Fishermen at Pigeon Cove



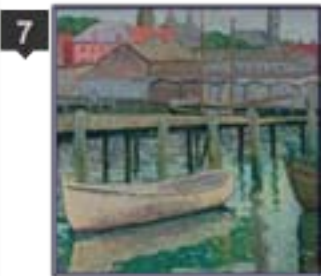
### Painting at Pigeon Cove



### Rockport Beach



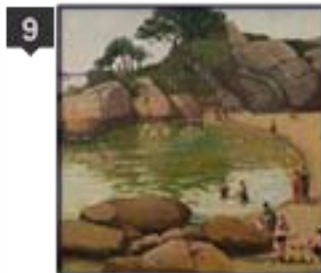
### White Boat



### Main Street



### Half Moon Beach



### Where is this scene?



# Emma Fordyce MacRae

## Cape Ann Landscapes Tour



To locate where Emma placed her easel:

Use with the larger Cape Ann Chamber of Commerce map with the close up of Gloucester to locate the town landscapes

- 1 SatNav : 5 Hodgkins Street, Gloucester, MA
- 2 SatNav : Hodgkins Cove, Gloucester, MA
- 3 SatNav : Lanes Cove Road, Gloucester, MA
- 4 SatNav : Breakwater Avenue, Gloucester, MA
- 5 SatNav : Breakwater Avenue, Gloucester, MA
- 6 SatNav : 1 King Street, Rockport, MA
- 7 SatNav : 72 Commercial Street, Gloucester, MA
- 8 SatNav : 2 Main Street, Gloucester, MA
- 9 SatNav : Stage Fort Park, Gloucester, MA
- 10 Where is this scene?  
If you can locate it please let us know.

More info on the landscapes at  
[www.emmafordycemacrae.com](http://www.emmafordycemacrae.com)

Where to Stay :  
Julietta House, 84 Prospect Street, Gloucester, MA.  
[www.juliettahouse.com](http://www.juliettahouse.com)

Where to View :  
Telephone Crane Collection on 978 290 9921 for  
directions and appointment.  
[www.cranecollection.com](http://www.cranecollection.com)

## Emma Fordyce MacRae Cape Ann Landscapes Tour

